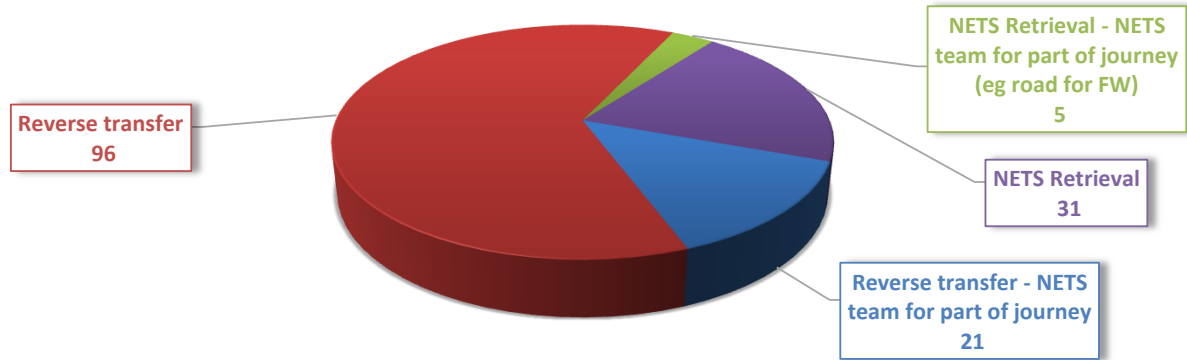


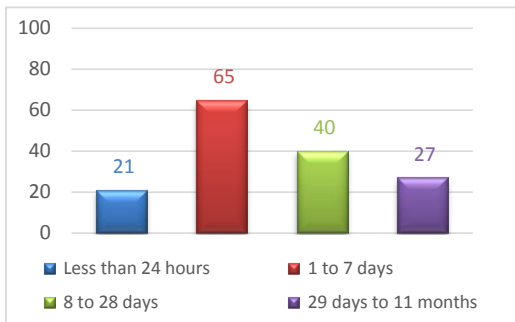
# NETS Hunter Mission Summary for 2021 - January to June

Total missions : 153

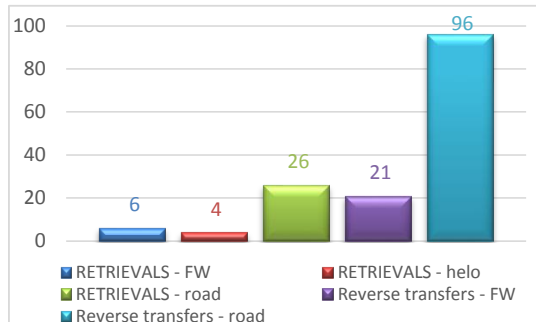


By mission type

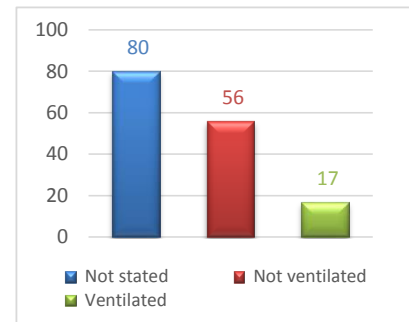
Missions by:



Age of child



Mission type and Vehicle



Level of care

Highlights for this period

Longest retrieval (road distance) was	<b>476</b> km	from John Hunter (incl. Children's) Hospital to Port Macquarie Base Hospital on Friday, 18 June
Distance travelled was	<b>2994</b> km	
Longest retrieval (time) was	<b>9:15</b> (hours)	from Maitland Hospital to Childrens Hospital at Westmead on Monday, 21 June
* Time spent on retrievals was	<b>68</b> (hours)	
Number of nurse-led retrievals was	<b>24</b> retrievals	
Number of nurse-led returns was	<b>117</b> returns	

\* only calculated if nurse start and end time entered