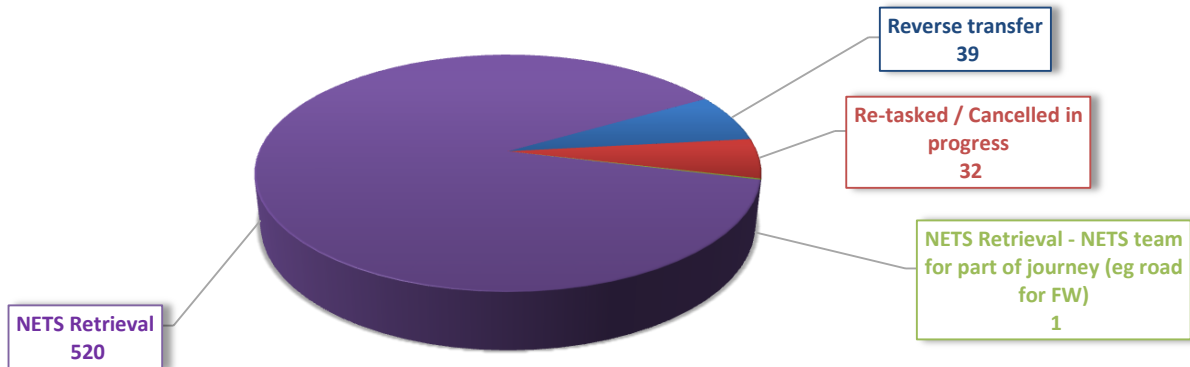


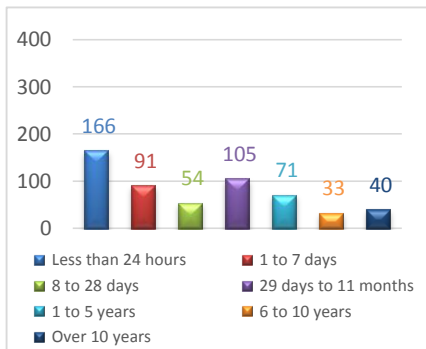
# NETS NSW Mission Summary for 2022 - January to April

Total missions : 592

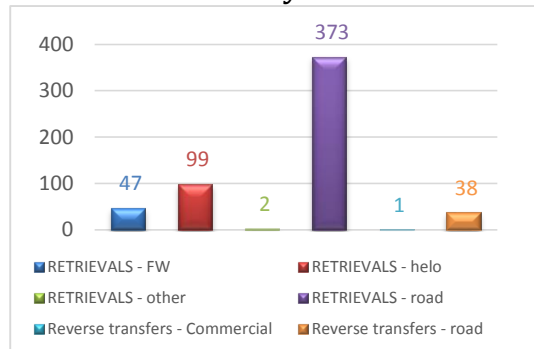


By mission type

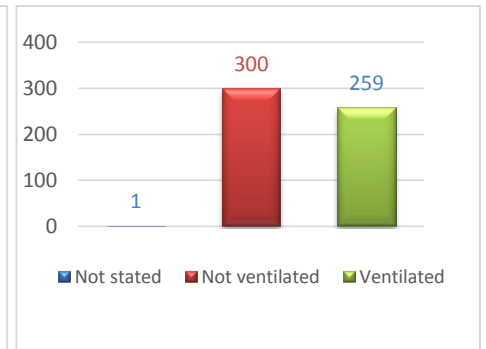
## Missions by:



By age of child



By mission type and vehicle



By level of care

## Highlights for this period

Longest retrieval (road distance) was	<b>597</b> km	from Calvary Hospital Riverina to Childrens Hospital at Westmead on Tuesday, 12th April
Distance travelled was	<b>16152</b> km	
Longest retrieval (time) was	<b>14</b> (hours)	from Calvary Hospital Riverina to Childrens Hospital at Westmead on Tuesday, 12th April
Time spent on retrievals was	<b>886</b> (hours)	
Number of nurse-led retrievals was	<b>16</b> retrievals	
Number of nurse-led returns was	<b>9</b> returns	