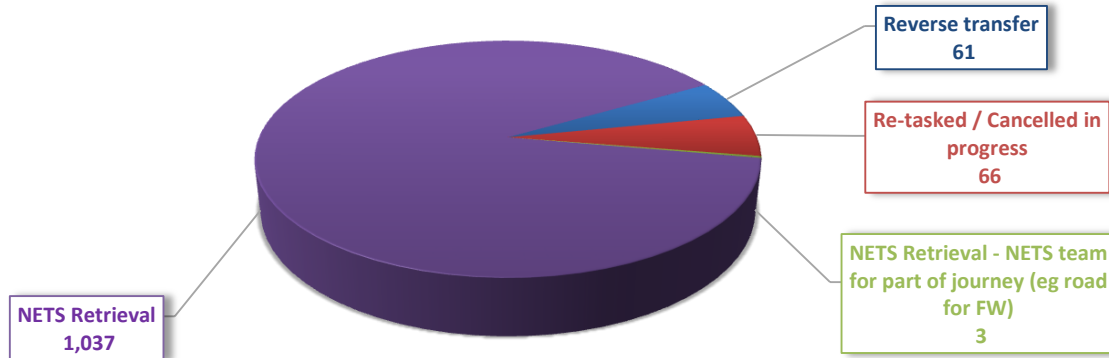


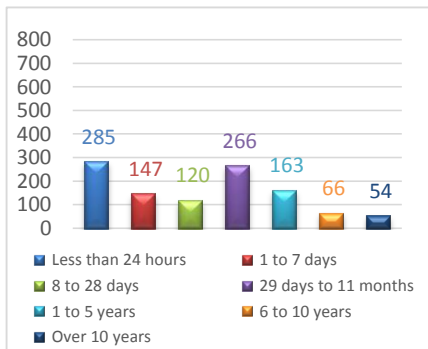
NETS NSW Mission Summary for 2022 - January to July

Total missions : 1167

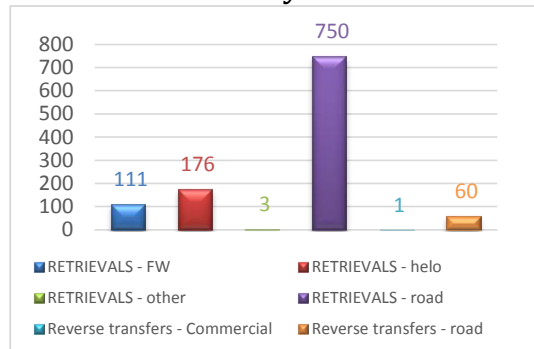


By mission type

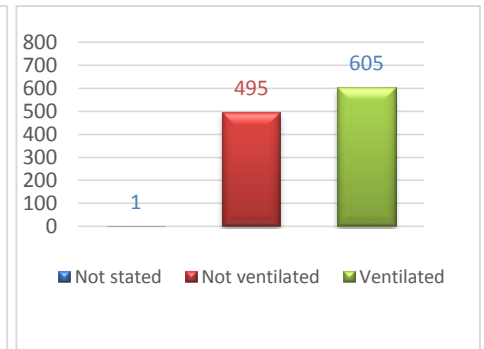
Missions by:



By age of child



By mission type and vehicle



By level of care

Highlights for this period

| | | |
|---------------------------------------|----------------------|--|
| Longest retrieval (road distance) was | 711 km | from The Canberra Hospital to Sydney Children's Hospital on Tuesday, 12th July |
| Distance travelled was | 21886 km | |
| Longest retrieval (time) was | 17 (hours) | from South East Regional Hospital Not moved on Tuesday, 5th July |
| Time spent on retrievals was | 1100 (hours) | |
| Number of nurse-led retrievals was | 32 retrievals | |
| Number of nurse-led returns was | 14 returns | |