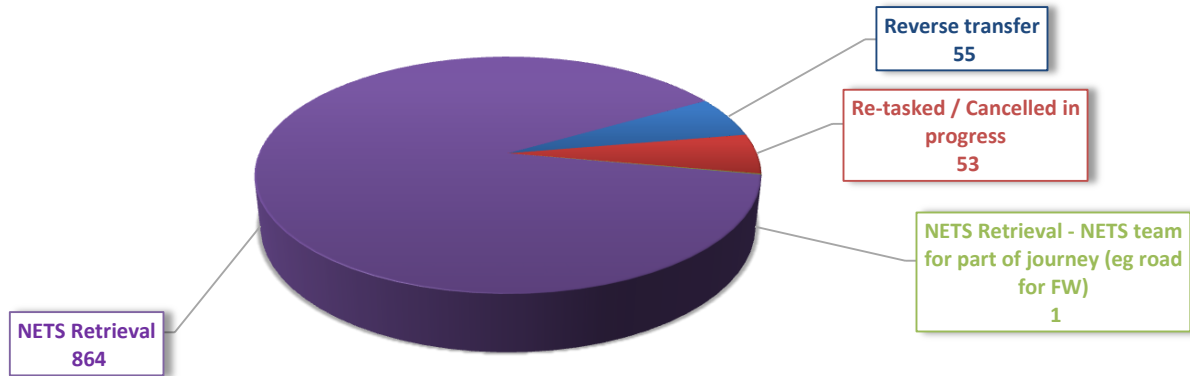


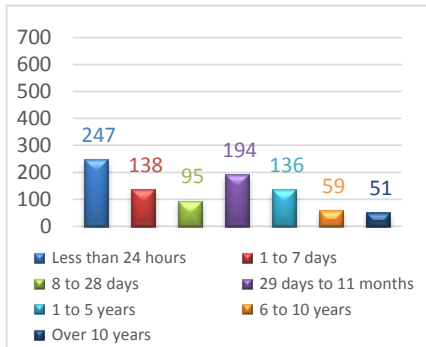
# NETS NSW Mission Summary for 2022 - January to June

Total missions : 973

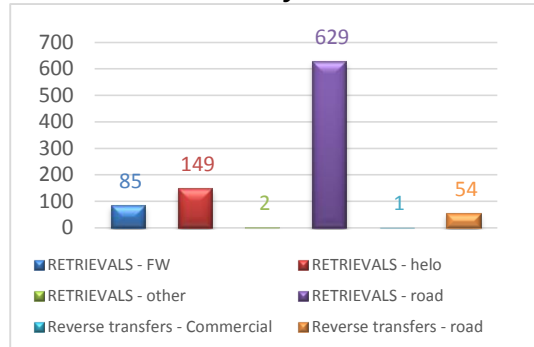


By mission type

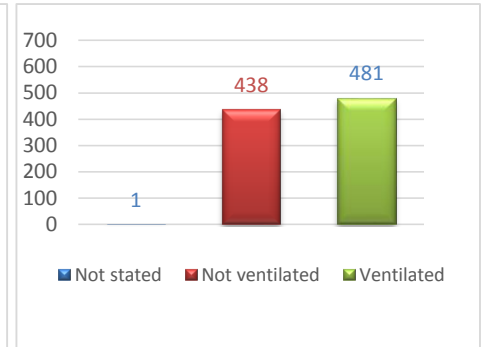
## Missions by:



By age of child



By mission type and vehicle



By level of care

## Highlights for this period

Longest retrieval (road distance) was	<b>652</b> km	from Wagga Wagga Hospital to The Canberra Hospital on Tuesday, 14th June
Distance travelled was	<b>20710</b> km	
Longest retrieval (time) was	<b>16</b> (hours)	from Broken Hill Base Hospital to Royal Prince Alfred Hospital on Wednesday, 29th June
Time spent on retrievals was	<b>1045</b> (hours)	
Number of nurse-led retrievals was	<b>31</b> retrievals	
Number of nurse-led returns was	<b>13</b> returns	