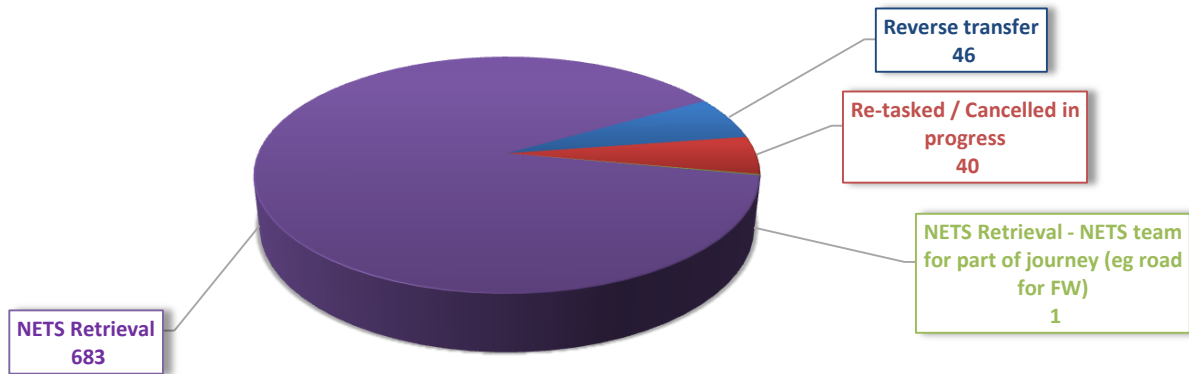


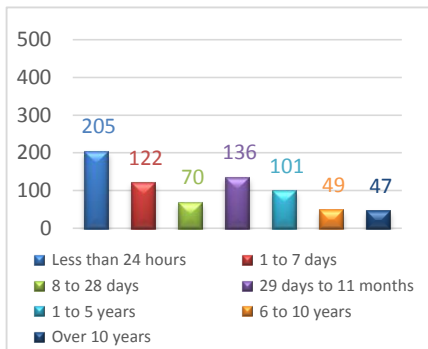
NETS NSW Mission Summary for 2022 - January to May

Total missions : 770

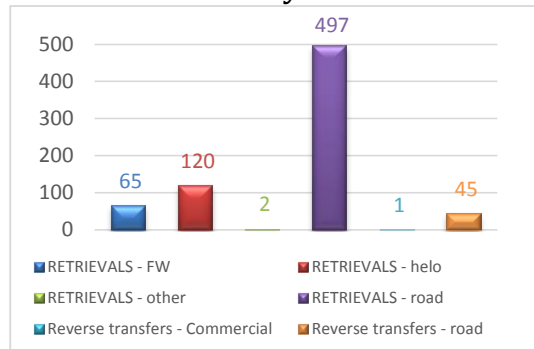


By mission type

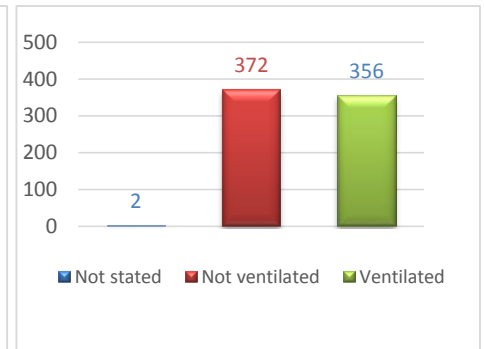
Missions by:



By age of child



By mission type and vehicle



By level of care

Highlights for this period

Longest retrieval (road distance) was	455 km	from Armidale & New England Hospital to John Hunter (incl. Children's) Hospital on Wednesday, 11th May
Distance travelled was	19636 km	
Longest retrieval (time) was	17 (hours)	from The Canberra Hospital to Childrens Hospital at Westmead on Saturday, 14th May
Time spent on retrievals was	974 (hours)	
Number of nurse-led retrievals was	30 retrievals	
Number of nurse-led returns was	12 returns	