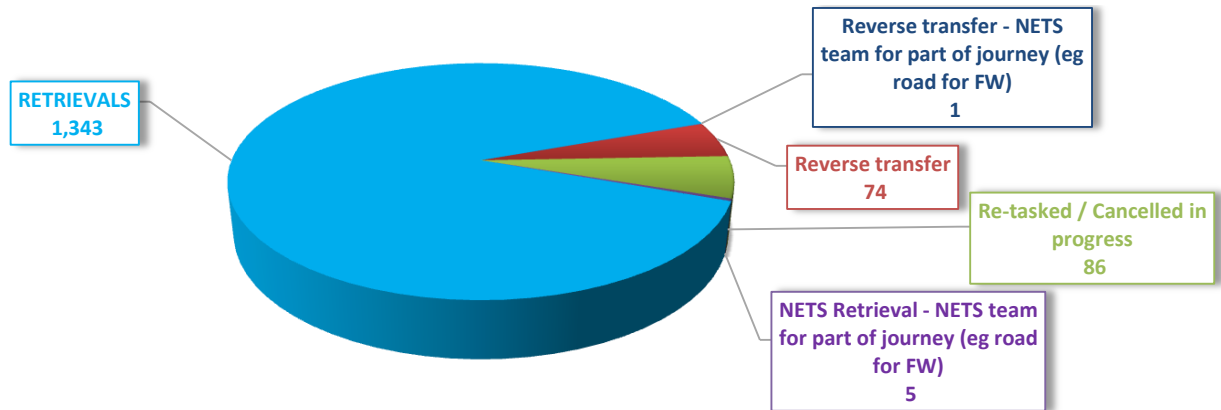


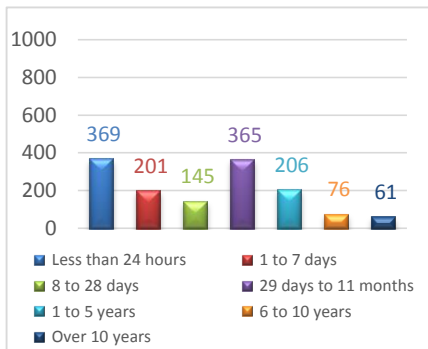
# NETS NSW Mission Summary for 2022 - January to September

Total missions : 1509

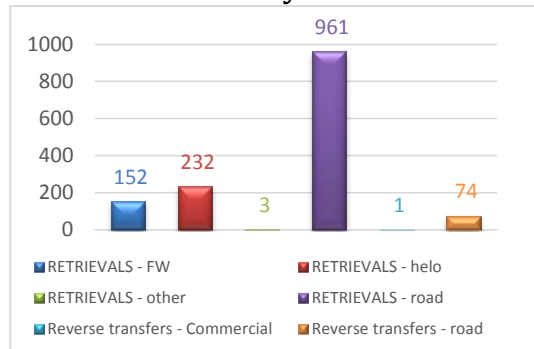


By mission type

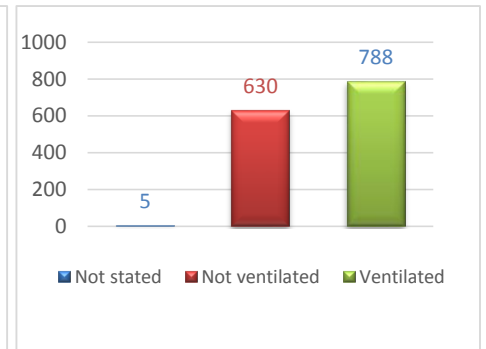
## Missions by:



By age of child



By mission type and vehicle



By level of care

## Highlights for this period

Longest retrieval (road distance) was	<b>618</b> km	from Griffith Base Hospital to The Canberra Hospital on Tuesday, 16th August
Distance travelled was	<b>15982</b> km	
Longest retrieval (time) was	<b>14</b> (hours)	from South East Regional Hospital to The Canberra Hospital on Friday, 16th September
Time spent on retrievals was	<b>982</b> (hours)	
Number of nurse-led retrievals was	<b>43</b> retrievals	
Number of nurse-led returns was	<b>16</b> returns	